



ONE CITY

EXPEDITIONARY SCHOOL

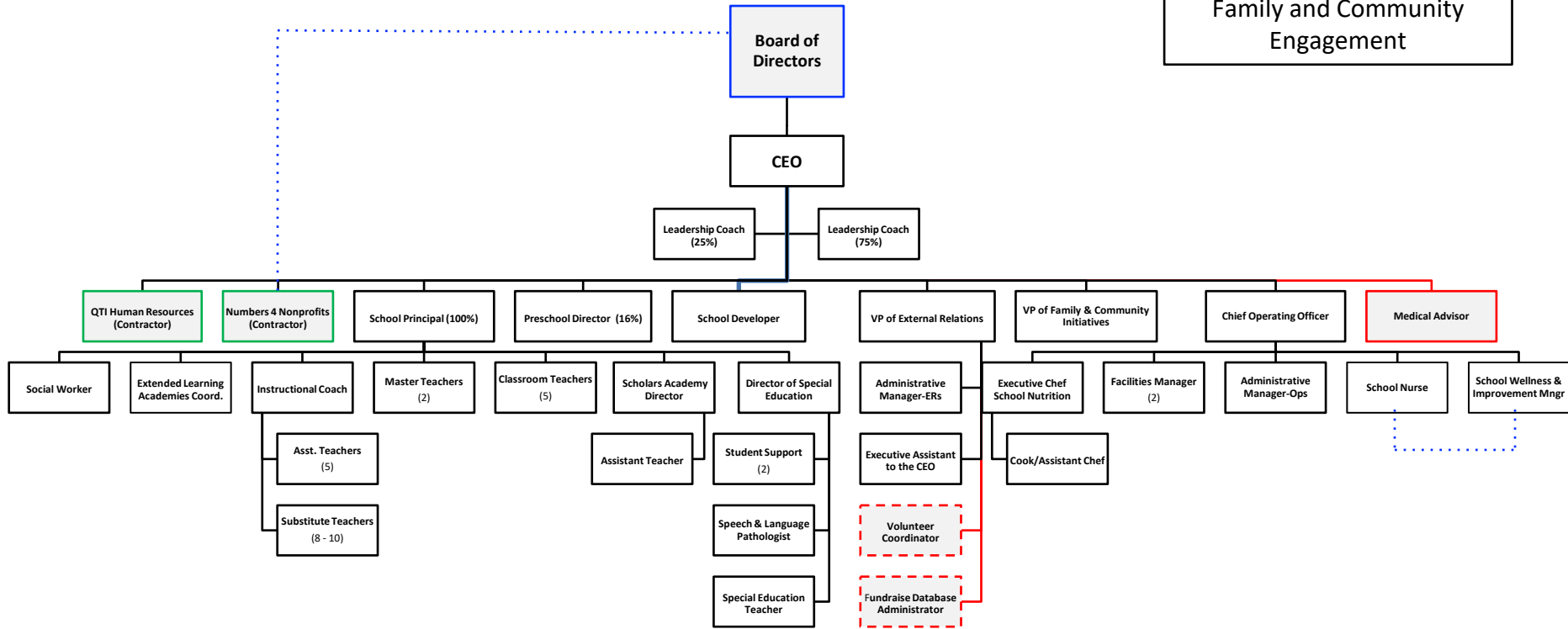
Board of Directors

- Finance
- Special Events
- Programs & Operations
- Capital Campaign

Staff Departments

- Administration
- Operations
- Classroom
- Student Support
- Family and Community Engagement

2020-21 ORGANIZATIONAL CHART



- Board of Directors
- Staffed by Volunteers
- Contracted Support