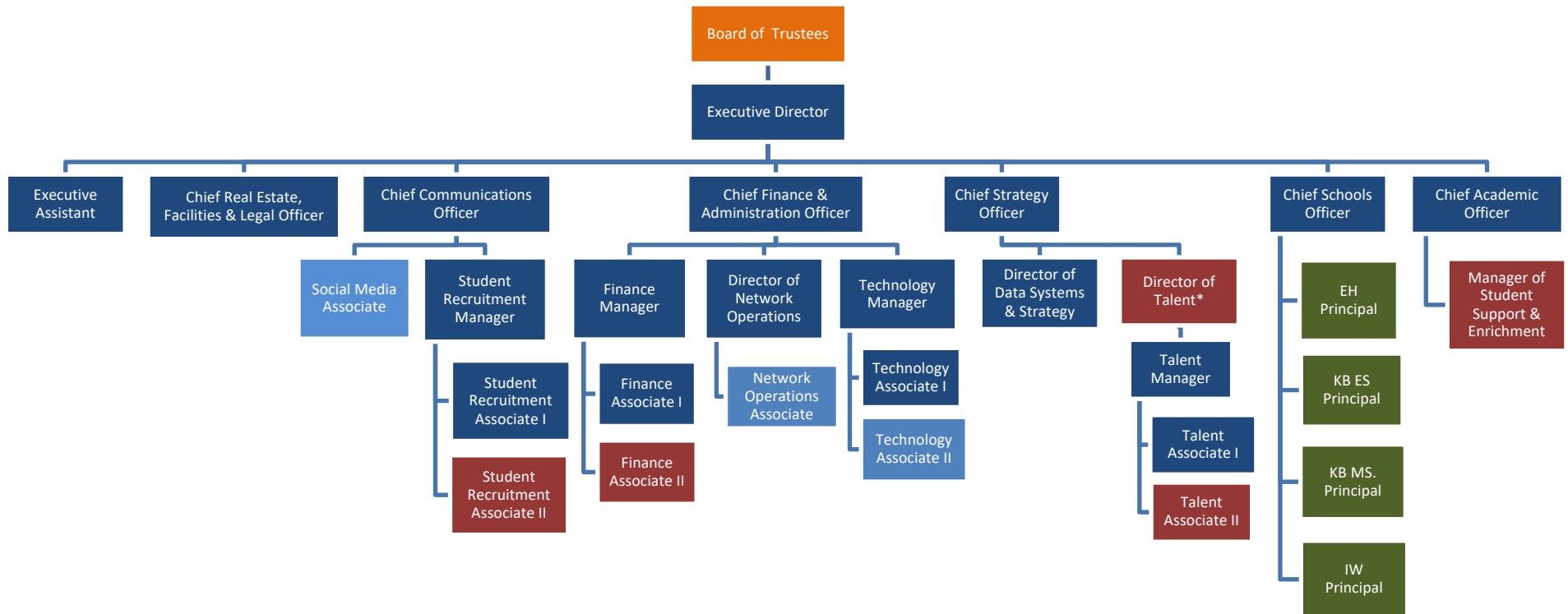
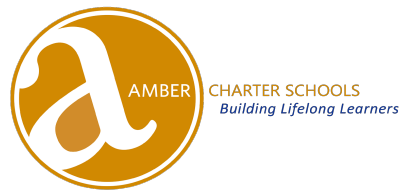


Shared Support Team 2021-22



- 3 positions have recently been filled: Social Media Associate, Network Operations Associate, Technology Associate.
- 5 positions are in the process of being filled (active searches are ongoing): Student Recruitment Associate II, Finance Associate II, Director of Talent, Talent Manager, Manager of Student Support and Enrichment.
- Principals report to the Chief Schools Officer but are reflected on school-based budgets.



School-Based Teams 2021-22

